

LUOYANG DOWELL ELECTRONICS  
TECHNOLOGY CO., LTD

# 2021 SERIES LARGE 3D PRINTER



Whatsapp: +86-17639138101



Whatsapp: +86-18839051575



# >>PRODUCT MANUAL

## ABOUT US

Luoyang Dowell electronics technology Co., Ltd was founded in 31th Dec, 2014. It's a forerunner of massive production and the reasearch and development for the domestic FDM 3D printer.

Our company is committed to the market application of 3D printer, which will provide efficient and affordable 3D printing plan for personnel,family, school and enterprises in order to meet the requirement of each creativity for the benefit, quality and rapid forming.

## OUR FACTORY

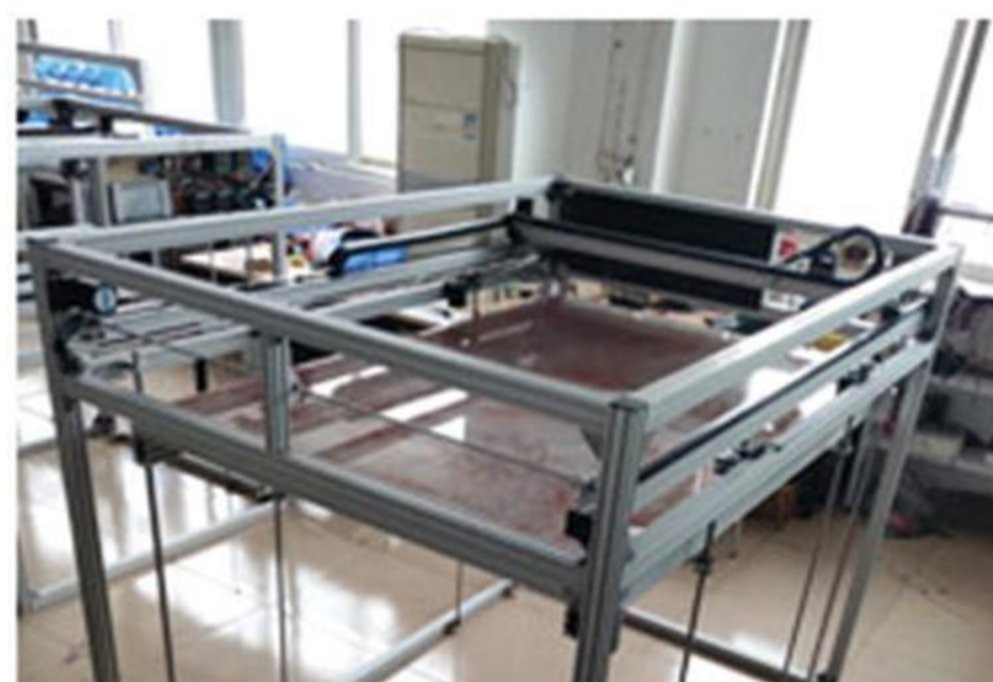
The total area of the factory is around 2000m<sup>2</sup> with more than 1000 sets of printer manufactured per month. Our printer sales to more than 30 countries and areas so we establish a professional large after-sale team. There's not only has the technician provide the operation training for client online, also can provide on-site testing and maintenance service.

## R & D STRENGTH

Our company was located in the millennium capital, Luoyang where are many high school communicated to establish the production, teaching and research base, with a complete system of research and develop, manufacture and after-sale services, has a strong technical strength.



R&D Team from Dowell 3D





# >>PRODUCT OVERVIEWS

**STANDARD SIZE:**

**2021 DM SERIES** NEW



Model No.:	Printing size(X*Y*Z)	Model No.:	Printing size(X*Y*Z)
DM6	600*600*600mm	DM8-6	800*800*600mm
DM6-8	600*600*800mm	DM8	800*800*800mm
DM6-10	600*600*1000mm	DM8-10	800*800*1000mm
DM6-12	600*600*1200mm	DM8-12	800*800*1200mm
DM6-16	600*600*1600mm	DM8-16	800*800*1600mm
DM10-6	1000*1000*600mm	DM1016-6	1600*1000*600mm
DM10-8	1000*1000*800mm	DM1016-8	1600*1000*800mm
DM10	1000*1000*1000mm	DM1016-10	1600*1000*1000mm
DM10-12	1000*1000*1200mm	DM1016-12	1600*1000*1200mm
DM10-16	1000*1000*1600mm	DM1016-16	1600*1000*1600mm
DM12-6	1200*1200*600mm	DM1220-6	1950*1200*600mm
DM12-8	1200*1200*800mm	DM1220-8	1950*1200*800mm
DM12-10	1200*1200*1000mm	DM1220-10	1950*1200*1000mm
DM12	1200*1200*1200mm	DM1220-12	1950*1200*1200mm
DM12-16	1200*1200*1600mm	DM1220-16	1950*1200*1600mm
DM1014-6	1400*1000*600mm	DM1018-6	1800*1000*600mm
DM1014-10	1400*1000*1000mm	DM1018-10	1800*1000*1000mm
DM1014-16	1400*1000*1600mm	DM1018-16	1800*1000*1600mm
DM1214-12	1400*1200*1200mm	DM1216-16	1600*1200*1600mm
DM1214-16	1400*1200*1600mm	DM1218-12	1800*1200*1200mm
DM1216-12	1600*1200*1200mm	DM1218-16	1800*1200*1600mm

- 1, All prices are EXW prices. If you need discount, Please consult our sales staff.**
- 2, Above dimensions are printing size, not printer size.**
- 3, DM series are high quality industrial large 3D printers.**
- 4, Blue part have products in stock, delivery time is 4 days; Other products delivery time is 10-14 days.**



# PRODUCT PARAMETER

## 2021 DM SERIES

MODEL	DM6	DM8	DM10	DM12
PRINT SIZE	600x600x600mm	800x800x800mm	1000x1000x1000mm	1200x1200x1200mm
NOZZLE DIA	0.4, 0.6(standard), 0.8, 1.0mm			
NOZZLE TEMP	0 - 420 °C			
BED TEMP	0 - 100 °C			
LOCATION ACCURACY	0.02 mm			
LAYER HEIGHT ACCURACY	0.04 - 0.6 mm			
PRINT SPEED	30 - 150 mm (SPEED IS ADJUSTABLE)			
OPERATE INTERFACE	7 INCH FULL COLOR TOUCH SCREEN			
FILE FORMAT	STL/OBJ/GCODE/JPG			
FILAMENT	1.75mm COMMON FILAMENT			
CONNECTION	SD CARD OFFLINE PRINTING			
INPUT POWER	110V/220V			
OPERATE WATTAGE	300W			
MACHINE SIZE	Based on the printing size, Add 270mm in the X direction and 310mm in the Y direction, 430mm in the Z direction			
SMART SYSTEM	AUTO LEVELING、 FILAMENT SENSOR 、 AUTO POWER-OFF			

### CUSTOM MADE:

- DUAL EXTRUDER & DUAL NOZZLE
- DUAL EXTRUDER & SINGLE NOZZLE (NOZZLE TEMP 260C)

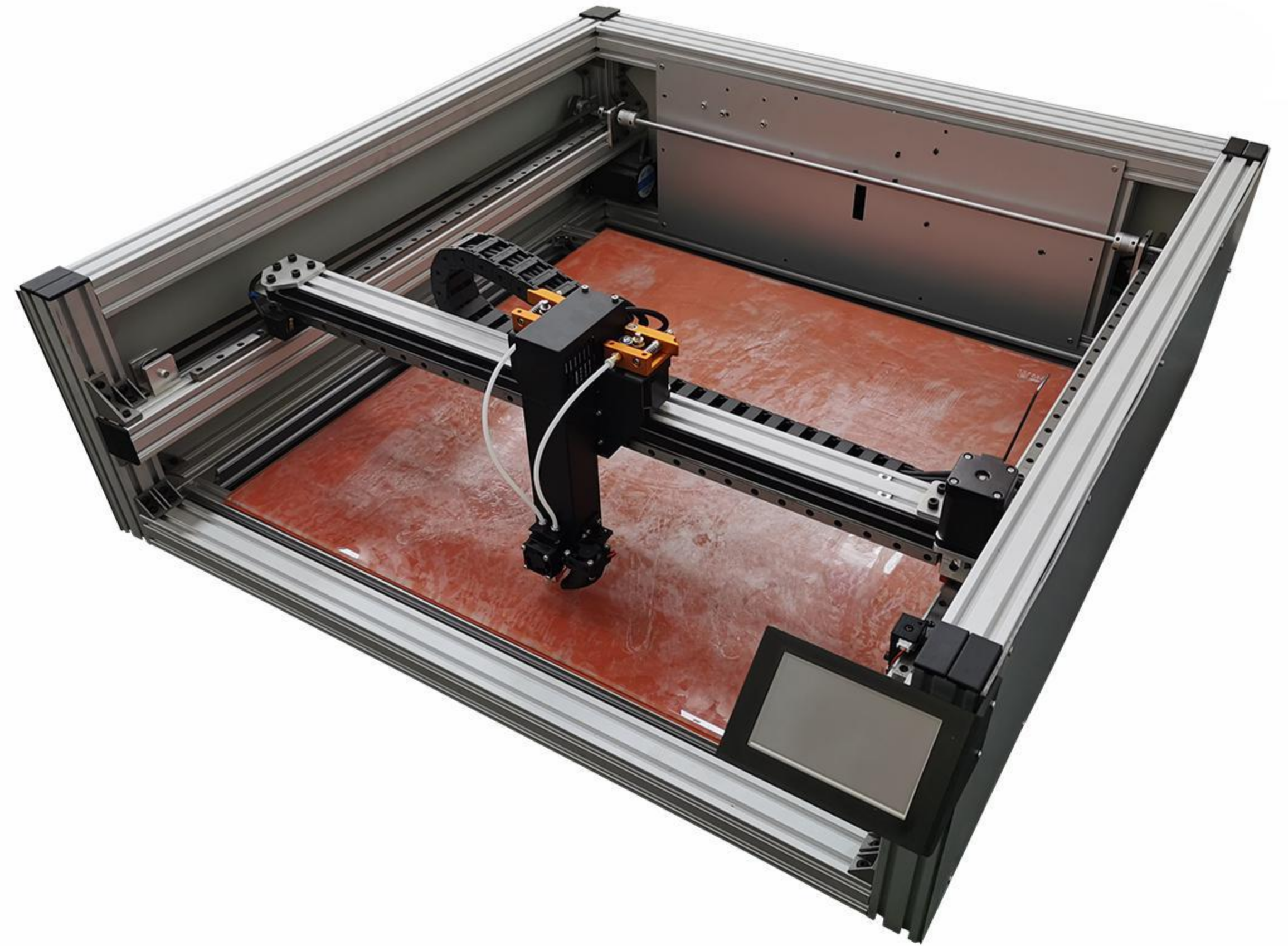
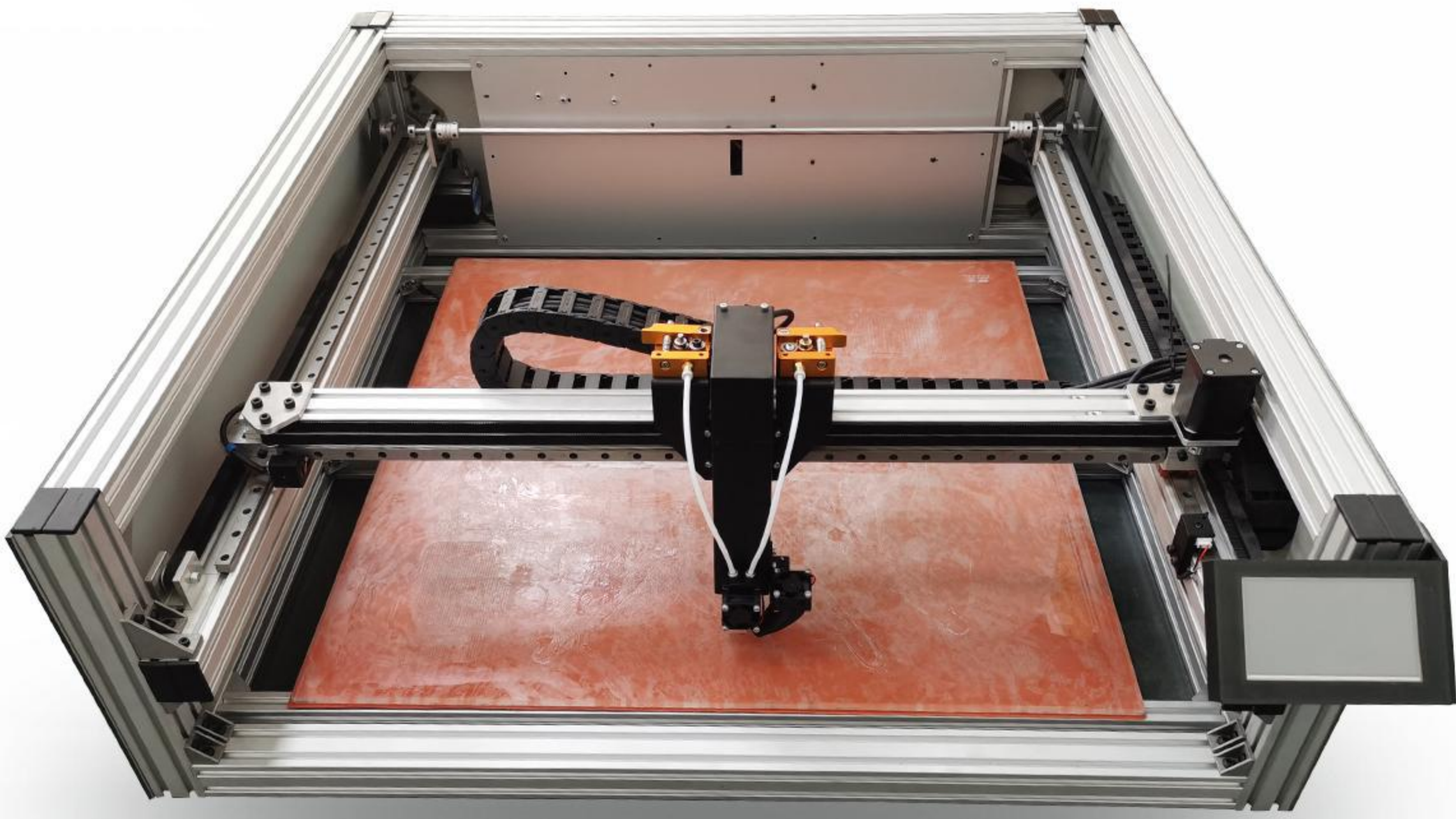
NOTICE: DUAL EXTRUDER WILL OCCUPY AROUND 10CM IN X AXIS.

NOTE: there are many different models, this parameter format can't list all.

If you need other models detailed parameter, just feel free to contact us!



## >> 3D PRINTER FOR ADVERTISING LETTERS



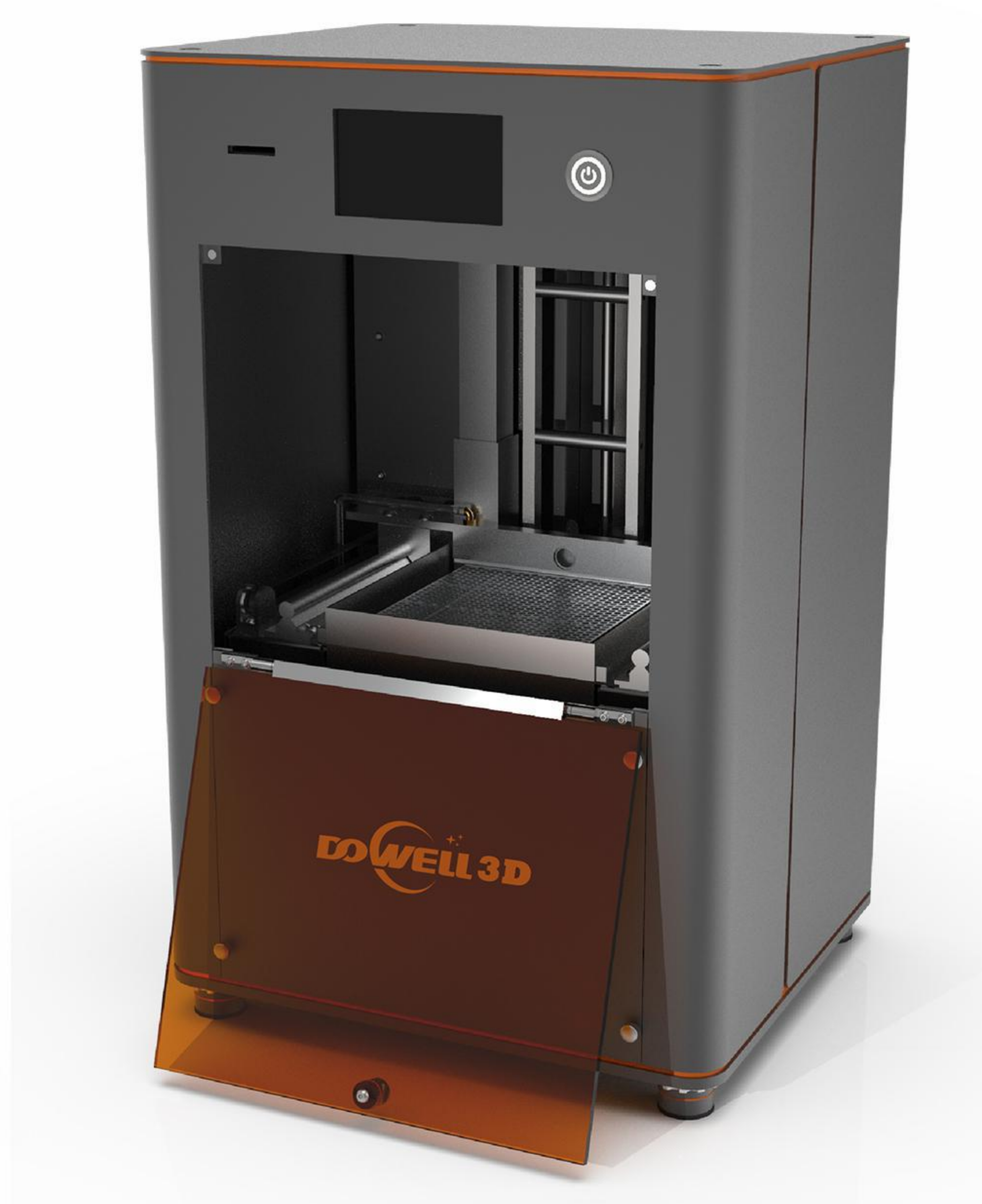
### PARAMETER OF 3D PRINTER FOR ADVERTISING LETTERS

Nozzle size	(Standard) 0.4、0.6、0.8、1.0mm			
Nozzle temp	0-260C			
Heating bed temp	0-100C			
Location accuracy	0.02MM			
Layer height accuracy	0.04-0.6MM			
Printing speed	30-150MM (adjustable)			
Operating interface	Color touch screen			
File format	STL/OBJ/GCODE/JPG			
Filament specification	Common filament with 1.75MM			
Connecting ways	USB/SD Card			
Input power	110/220V			
Function	Auto leveling / filament sensor/ auto resume from power off			
Standard model size				
	G6	G8	G10	G12
Printing area	600*600*85MM	800*800*85MM	1000*1000*85MM	1200*1200*85MM
Machine size	990*910*320MM	1190*1110*320MM	1390*1310*320MM	1590*1510*320MM
Heating platform wattage	900W	1400W	2300W	2800W
Operate wattage	300W	300W	300W	300W

Please consult sales for detailed specifications



## >> 3D SLA PRINTER



## >>> PARAMETER

Scanning method:	galvanometer
Building location:	TOP-DOWN
Spot diameter:	0.075-0.1mm
Printing size:	130*130*180mm
Layer thickness:	0.03-0.15mm
Building accuracy:	±0.1mm
Software:	GNOMESLIC
File formule:	.gcode
Overall size:	345*315*560mm
Weight:	30KG



# >>PRAISE AND FEEDBACK

订单编号: 41826414001028409

订单编号: 36957930501022586

Isaac Siraj,Saudi Arabia

按时发货: 非常满意 (5 stars)

供应商服务: 非常满意 (5 stars)

William Sargent,United States

按时发货: 非常满意 (5 stars)

供应商服务: 非常满意 (5 stars)



Large 3d printers, 800x800x800mm

★★★★★

Printer received thanks to the company

[回复该评论](#)



3d printer PLA filament

★★★★★

Printer received thanks to the company

[回复该评论](#)

Lucas van Beers 2019-12-5 08:49:55



Lucas van Beers 2019-12-5 08:50:04

I printed the bike frame with your printer!

Lucas van Beers 2019-12-5 09:03:05

Thanks

Lucas van Beers 2019-12-5 09:03:32

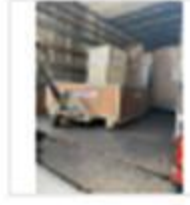
The printers works quit well so far. It printed for 8 days without a fail



Big 3D printer 1000\*1000\*1000mm, with auto l...

★★★★★

Rita and Dowell 3D as a whole are a great, thoughtful, caring group and provide a great 3-D printing manufaturing capabilities with full end to end service! being from NYC and Dealing all the way with China with Dowell has made it a pleasant trandaction! We will use Dowell again... [查看更多](#)



[回复该评论](#)



Dowell D2 DIY digital laser 3D printers

★★★★★

Rita and Dowell 3D as a whole are a great, thoughtful, caring group and provide a great 3-D printing manufaturing capabilities with full end to end service! being from NYC and Dealing all the way with China with Dowell has made it a pleasant trandaction! We will use Dowell again... [查看更多](#)



[回复该评论](#)

发送者\* luc : b dr : @gmail.com

( IP : 209.85.219.43 )

收件人 Dowell 3D printer <fatima@dowell3d.cn>

发送时间2019-12-18 11:01:36 接收时间 2019-12-18 11:01:56 归属者 袁雪妮

是否处理:

主题 Re: Re: Re: Re: Re: Re: Re: Re: Re: Re: 3D Printer From Dowell withgoodpricean

内容

HELLO, THANKS FOR THE MACHINE , IT WORK WELL AT HIS TIME.

# >>PRINTING FROM CUSTOMERS



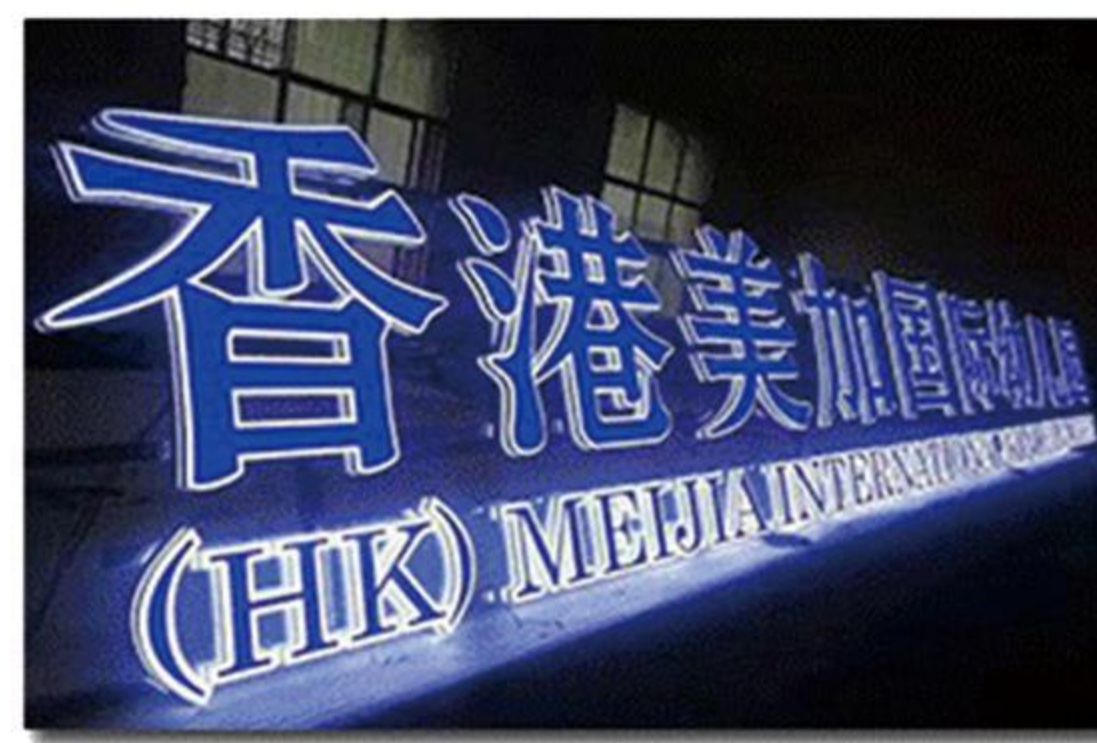
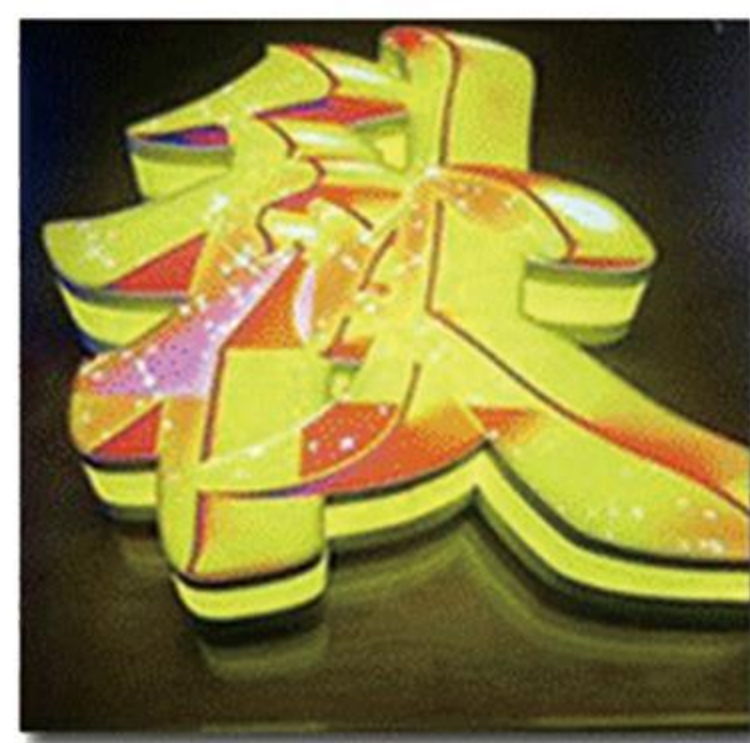
Feedback from Netherlands clients



Feedback from Whale song in New zealand



Feedback from USA clients



Feedback from 3D printer for advertising letters

Product inventory available and quotation request e-mail to [sales@dowell3d.cn](mailto:sales@dowell3d.cn)



# >>BUYING GUIDE

## Warranty

We will provide one-year warranty of all our series production for motherboards, motors and power supplies.

We will provide an extra set of wearing parts for free of all our series production.

## Quality

All our series productions will make a 100% full test before arrange shipping, and we will provide pictures and videos to th ebuyer.

Once the buyer accept our test consequences and agree to arrange shipping which means the buyer accept the quality of our product.

We do not accept any complaints or refund applications filed by buyers on the grounds of "quality problems" after receipt of products.

## Package, custom clearance and delivery

Our products is packaged with very strength wooden box, it's possible to have damage in transportation.

Please double check whether the package is damaged or not before you sign the package.

We have insurance for every shipment,so if the package is badly damaged, please take photos of damaged package as evidence.

At the same time, contact with the sales consulting about insurance claims.

Due to the damage of package and cause the internal accessories damaged, we will provide the free replacement of accessories.

Regardless of the mode of transportation, the buyer has the responsibility for helping handling with the custom

clearance and related matters, if there's extra charges such as warehousing charges, additional customs clearance charges,

returning charges, additional duties, etc.. due to the buyer's non-cooperation, the buyer has the responsibility for it.

We do not accept any complaints or refund applications by buyers after receipt of products on the grounds

of "damaged package or internal product damaged".

## Return and Exchange goods

If the buyer has a return request, it must be submitted within 7 days after the delivery, and the buyer needs to pay all related costs for returning.

## Assembly

For DM and DS series production, in order to decrease the package volume and decrease the shipping cost, the packaged product only finish 80% assembly, balanced assembly need to be finished by the buyer. The buyer shall operate in strict accordance with the assembly instructions provided by us. If there's any doubt, please contact the sales in time. The buyer and relevant personnel shall not disassemble the assembled parts without authorization.

We do not accept any complaint or refund application from the buyer after assembling or testing,

for reasons of "unclear assembly instructions, defective product design, damaged parts, poor printing effect, etc..."

## Upgrades and modifications

If the buyer upgrades or modification our products without our permission, the buyer will be deemed to automatically give up the 12-month warranty provided by us. Therefore, we will no longer provide free replacement for damaged parts.

We do not accept any complaint or refund application for "product design defect, damage of spare parts, no after-sales service, poor printing effect, etc." after private upgrade or modification.

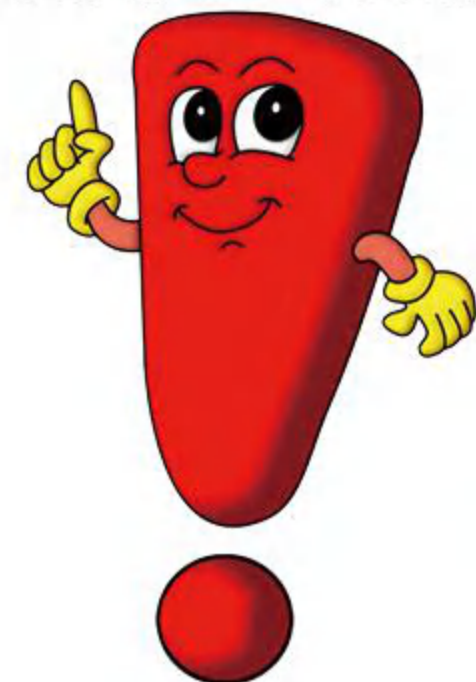
## Alibaba trade assurance order and Paypal payment

If the buyer is plan to use the Alibaba trade assurance order or Papypal, please read this clause carefully.

Within the Alibaba trade assurance order system and Paypal, we do not accept

"refund applications" and "rejection applications" for any reasons. If the buyer insists on submitting the "refund application" and "rejection application", the buyer will be deemed to have automatically waived the warranty and free technical support provided by us.

At the same time, the buyer must return all products in the order and pay all related charges . We will write this clause into the contract, the Alibaba trade assurance order and the terms of Paypal. Once the buyer pays the Alibaba trade assurance order or Paypal, it will be deemed to have accepted this clause.



Please read the above terms carefully,  
once you reach a deal with us, it means  
you fully accept these terms.







**LUOYANG DOWELL ELECTRONICS TECHNOLOGY CO., LTD**

**Address: Hi-tech zone, Luoyang city, 471002, China**

**Contact number: +86-17639138101**

**Email: sales@dowell3d.cn**

**Whatsapp: +86-17639138101**

**Wechat: dowell3d**

**www.dowell3d.cn**

**www.dowell3d.com.cn**

**www.dowell3dprinter.com**